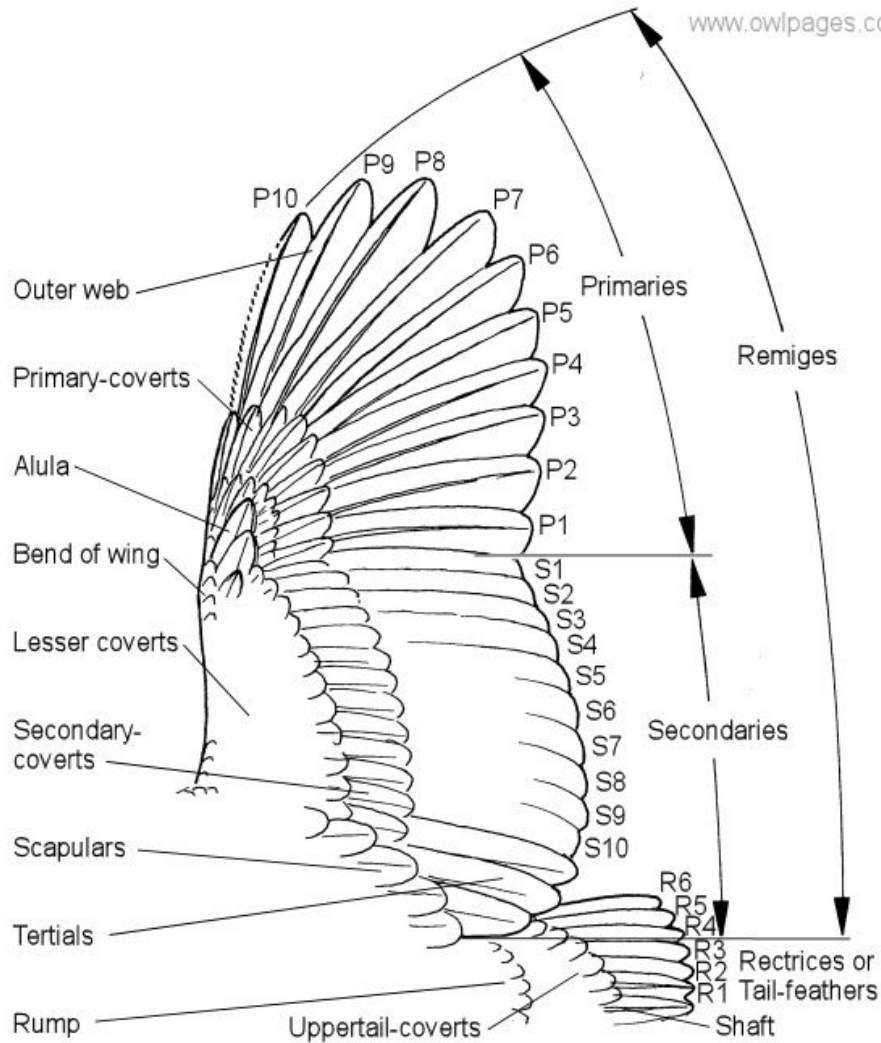
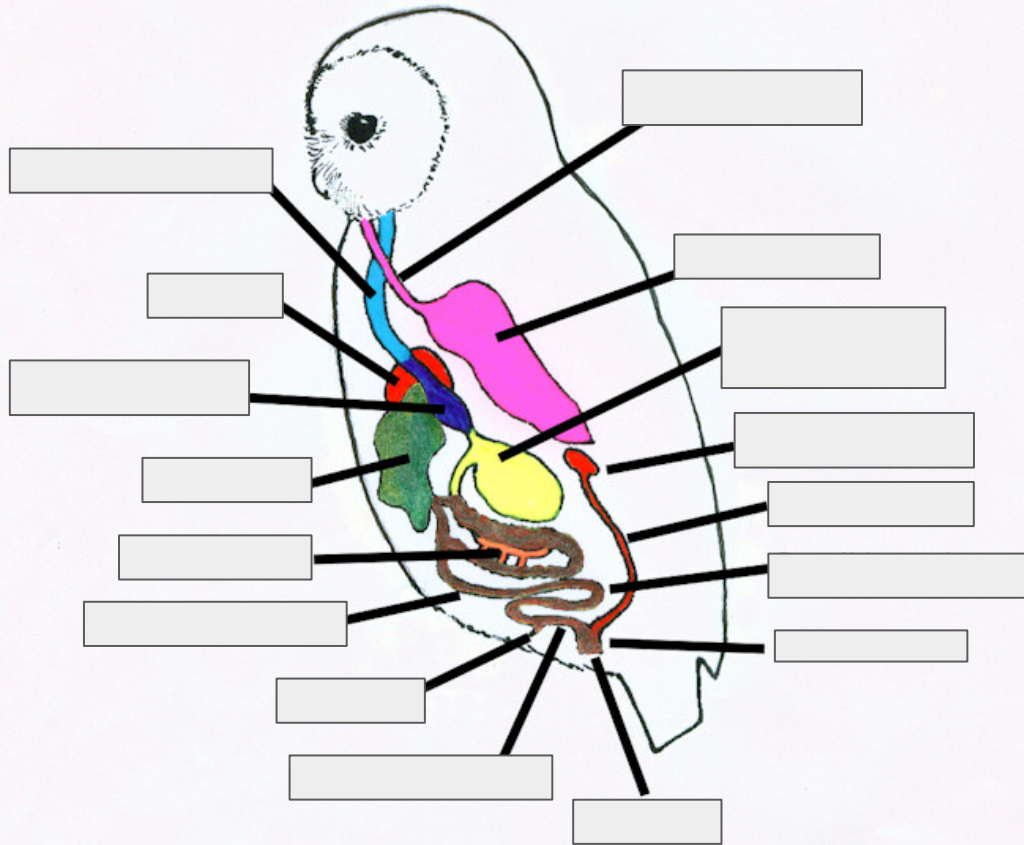


- Alula
- Tertials
- Uppertail-coverts
- Primaries
- Outer-web
- Lesser-coverts
- Bend of wing
- Rerriges
- Scapulars
- Primary-coverts
- Secondaries
- Shaft
- Rump
- Rectrices/Tail Feathers
- Secondary-coverts

Owl Wing Physiology

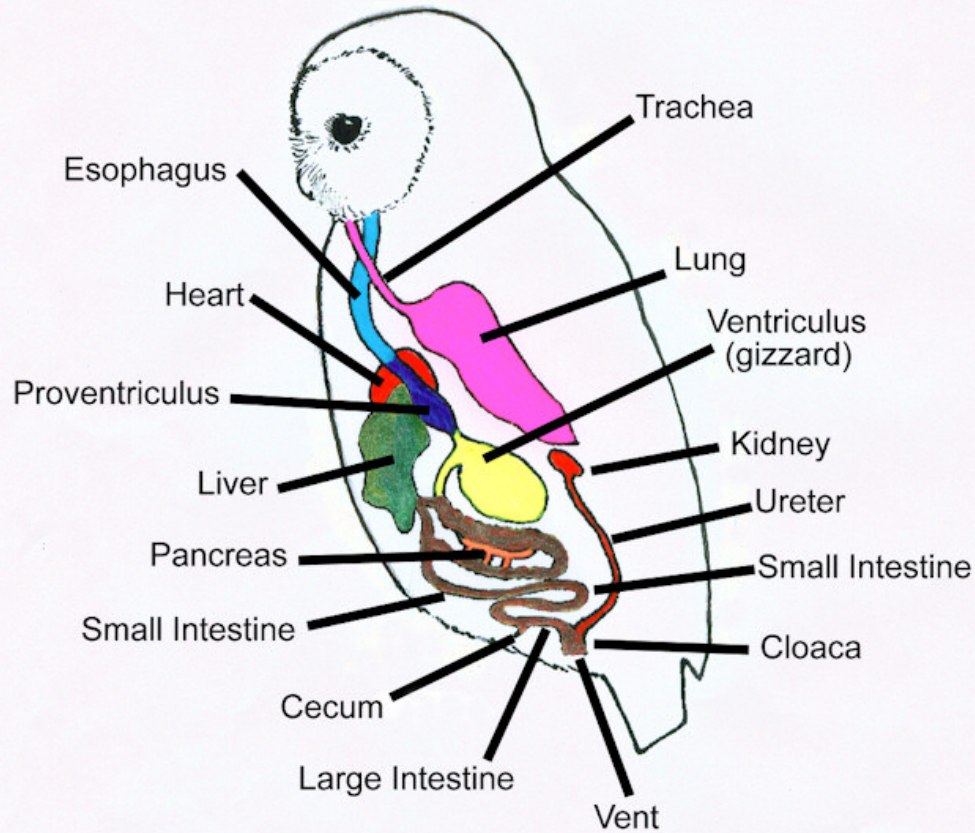
Wing Physiology Key





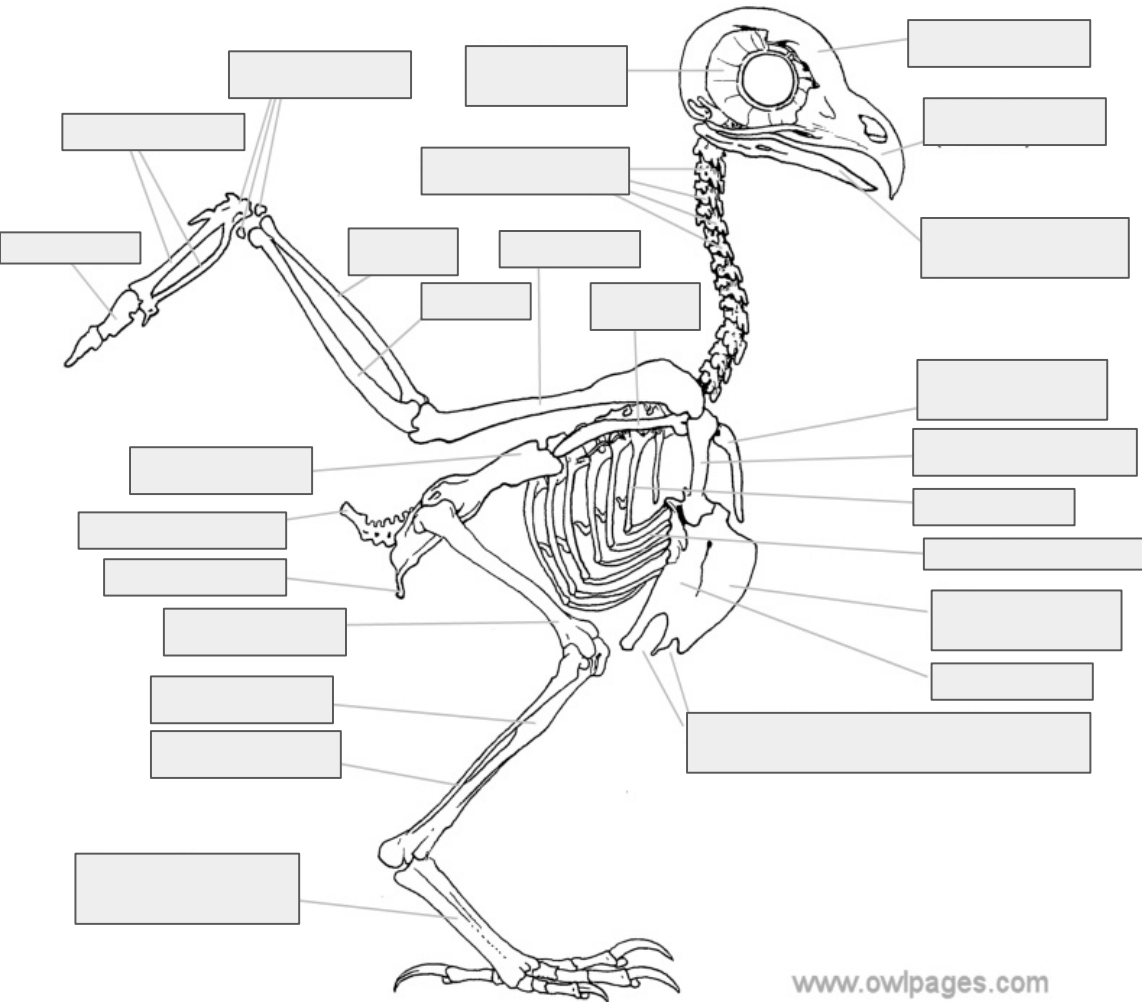
- Kidney
- Vent
- Small Intestine
- Proventriculus
- Trachea
- Ureter
- Large Intestine
- Liver
- Esophagus
- Heart
- Cecum
- Cloaca
- Ventriculus (gizzard)
- Pancreas
- Lung

Owl Internal Anatomy



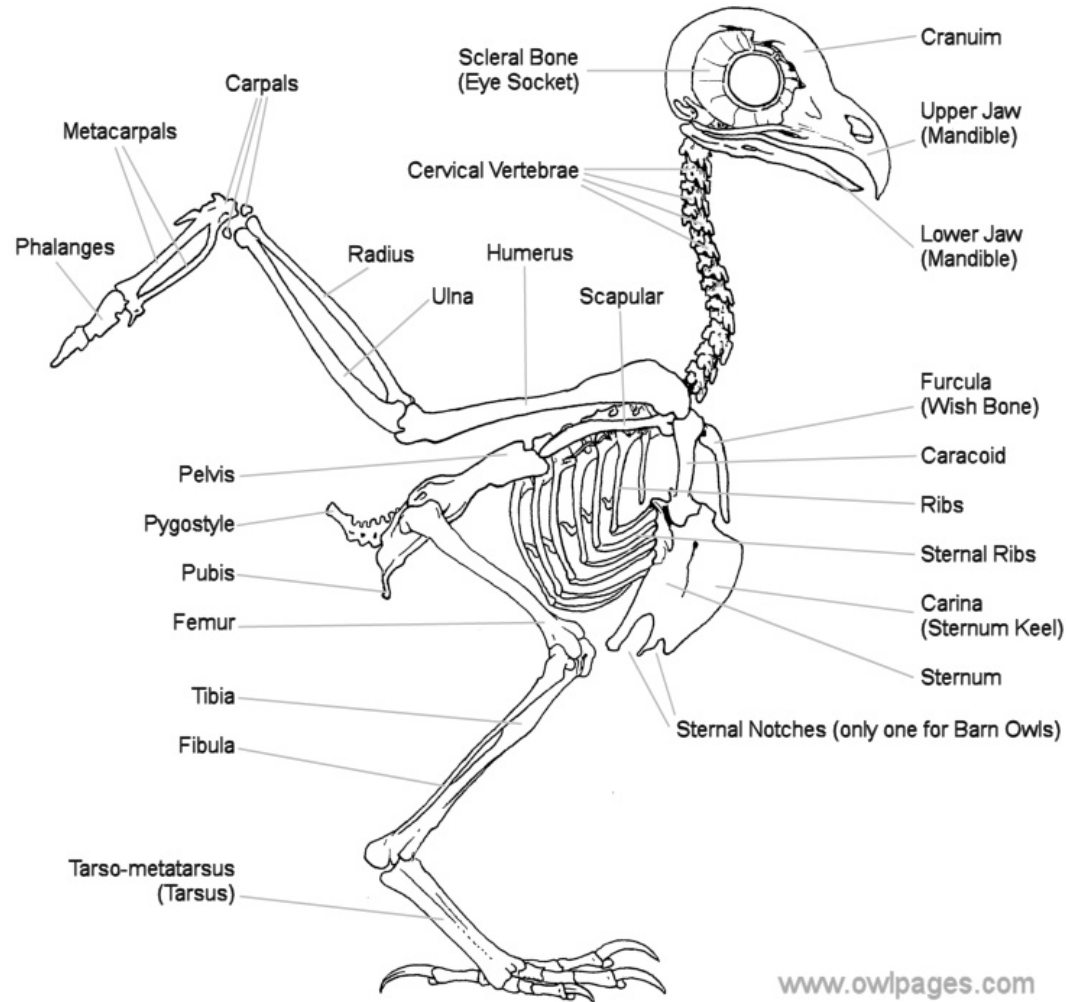
Key

Owl Skeletal System

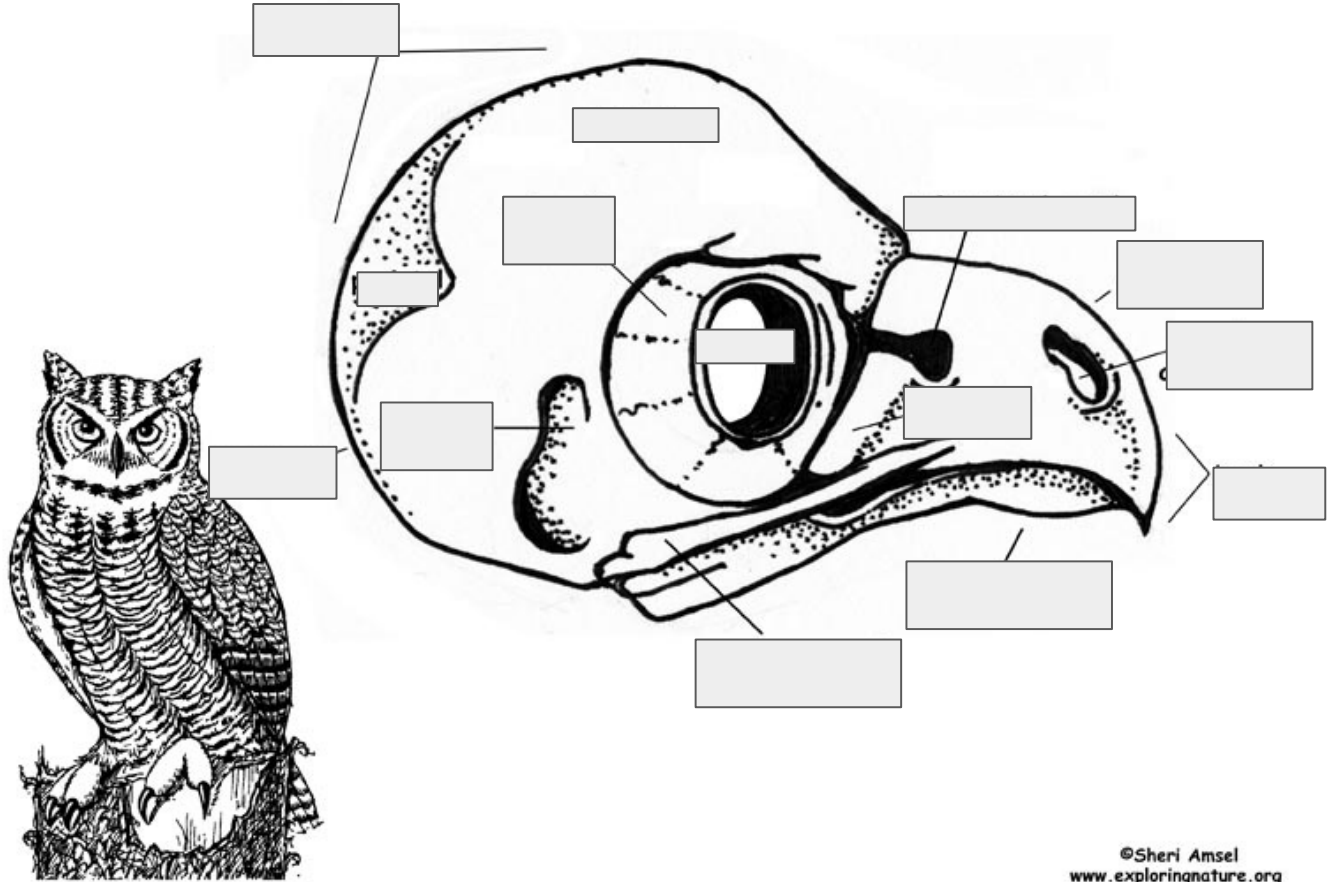


- Ulna
- Caracoid
- Sternum
- Cranium
- Tibia
- Pelvis
- Phalanges
- Tarso-metatarsus
- Ribs
- Lower jaw
- Humerus
- Metacarpals
- Pygostyle
- Sternal Ribs
- Upper jaw
- Scapular
- Carpals
- Femur
- Furcula/Wish Bone
- Sternal Notches (Barn Owls)
- Cervical Vertebrae
- Pubis
- Radius
- Fibula
- Carina/Sternum Keel
- Scleral Bone/Eye Socket

Key



Great Horned Owl Skull



- Maxilla
- Sclerotic ring
- Occipital
- Nasal aperture
- Infraorbital canal
- Cranium
- Zygomatic arch
- Parietal
- Beak
- Upper mandible
- Lower mandible
- Orbit
- Frontal
- Auditory Meatus

Great Horned Owl Skull

